

# MV SERVANT



**General Info**

Built	2018
Port Of Registry	Hongkong
Flag	Hongkong
IMO	9741126
Class	Lloyds Register
Type	Heavy-Lift Box-Hold MPP TWD

**Tonnage**

DWT	12,301 MT
GT/NT	11,436 / 4,391
Panama	
Suez GT/NT	

**Dimensions**

LOA	147.00 m
Beam	22.80 m
Draft Summer	8,10 m
Draft Winter	

**Capacity**

Bale cbm	16,180 cbm
Bale cbm w/o TWD	17,600 cbm
Bale cbft	571,392 cbft
Bale cbft w/o TWD	621,537 cbft

**Containers**

Hold	316 TEU
Deck	522 TEU
Total	838 TEU
Refer	

**Gear**

Type Of Gear	2 x 250 MT 500 MT combinable
--------------	------------------------------

**Hold/Hatch**

2 Holds / 2 Hatches

**Hold**

Dimensions	Hold no. 1: 12.75 m x 12.56/9.30 m Hold no. 2: 76.50 x 17.60/12.50 m
------------	---

**Hatch**

Height	Hold no. 1: 11.30 m Hold no. 2: 11.70 m
--------	--

Ventilation

Hatch Dim	Hatchcover: no. 1: 13.20 x 13 m Hatchcover no. 2: 76.75 x 18.10 m
-----------	--

Hatch Cover Type	Hydraulic Folding and Pontoon
------------------	-------------------------------

**Tween Deck**

Positions	Hold no. 1: 1 position Hold no. 2: 3 positions
TWD Heights	Hold no. 1: 5.05 m (tanktop to below tweendeck) Hold no. 2: Pos 1: 3.00 m/7.90 m (below/above tweendeck) Pos 2: 5.50 m/5.40 m (below/above tweendeck) Pos 3: 8.00 m/2.90 (below/above tweendeck)
TWD Cover Type	Pontoon

**Permissible Loads**

Tanktop	16 MT / m2
Tween Deck Hatch	4 MT / m2
Weather Deck	4 MT
Hatch	

**Speed**

Speed	About 15.0 knots
Eco Speed	

**Tank Capacity**

MGO	
Fresh Water	

**Miscellaneous**

IMO Fitted	
TWD Pontoons as Bulkhead	

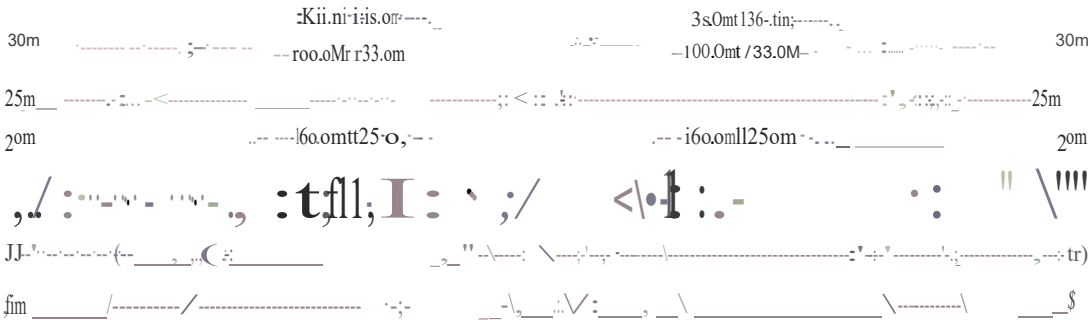
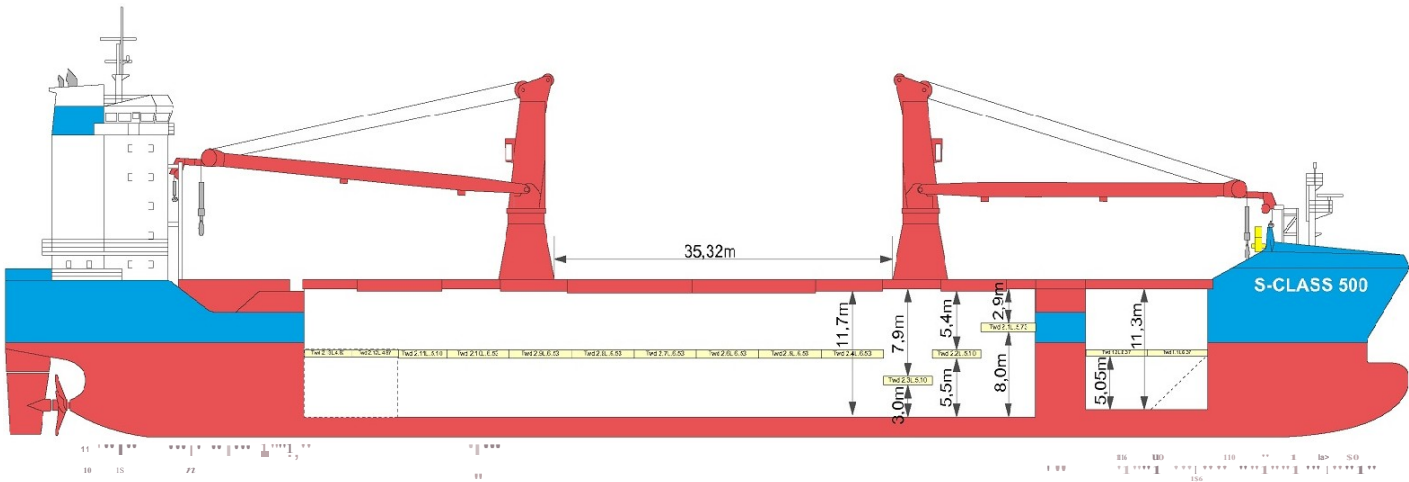
Intermarine is a leader of worldwide ocean transport for heavy lift and project cargoes.

Contact us today: +1 800 229 8701

DETAILS GIVEN IN GOOD FAITH  
BUT WITHOUT GUARANTEE.

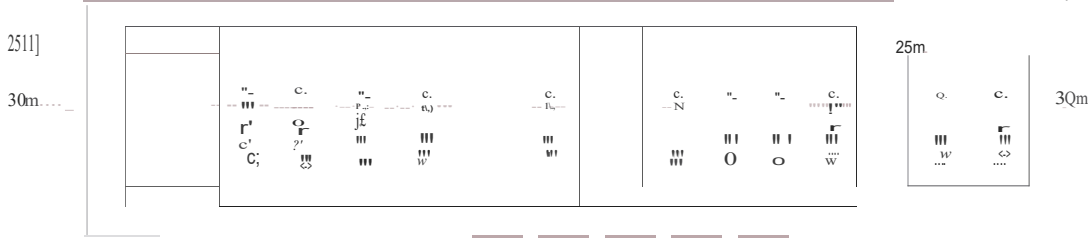
VISIT US AT  
[WWW.INTERMARINE.COM](http://WWW.INTERMARINE.COM)

# MV SERVANT



Top view Main Deck

Top view Tweendeck



Top view Tank Top

